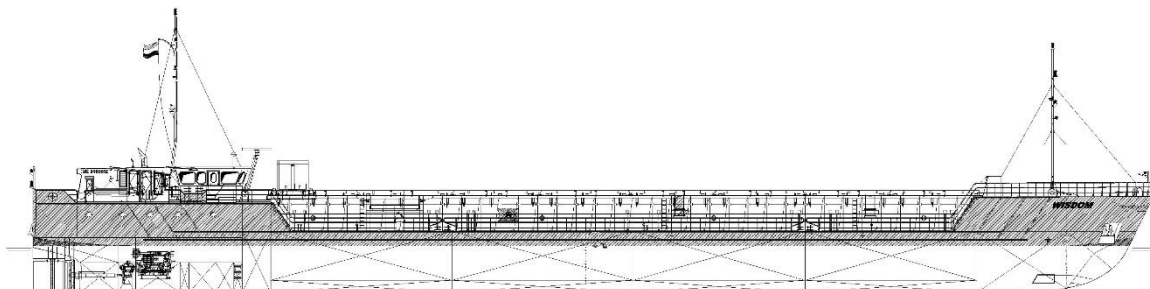


MV. "H&S WISDOM"



- Flag : Dutch + phone : +31 610 971 933
 - Built : 02 / 2004 + fax : +31 610 971 934
 - Type : Singledecker / box
 - Port of Registry : D e l f z i j l + e-mail : wisdom@amasus.nl
 - Call Sign : P C A Z
 - IMO No. : 9195559
 - MMSI No. :

 - D.W.A.T. : 1842
 - D.W.C.C. : abt 1750 Summer / abt 1650 Winter
 - Tonnage GT/NT : 1552 / 804
 - L.O.A. : 82,19 m
 - Beam : 11,30 m
 - Draft laden : 3,42 m
 - Ballast draft : approx. 2,80m
 - Airdraft : 6,50 m

 - Hold dimension : 51,80 x 9,30 x 6,20 m
 - Cubic capacity : 105.462 cbft (2986 m³)
 - Tanktopstrength : 12,0 mt / m²
 - Bulkheads : 2 movable bulkheads
 - Hatch covers : steel pontoons, operated with own gantry crane

 - Main engine : Caterpillar
 - output : 955 KW at 1600 RpM adjusted to 750 KW
 - Propeller : fixed, with gearbox
 - Consumption : abt 9,5 knots on abt 4.200 liter gasoil
 - Auxiliaries : 2 x 80 KVA, 50 Hz
 - Emergency Gen. : 1 x 56 KVA, 50 Hz
 - Bow Thruster : Scania DS 11 242 KW
-