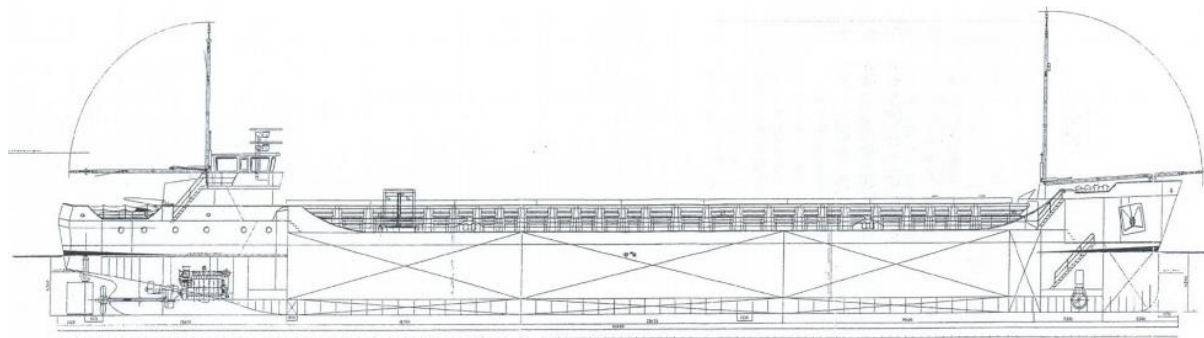


## MV “EEMS SPRINTER“



- Flag : Dutch + phone : +31 647 344 563
- Built : 2007 + fax : --
- Type : Singledecker / box
- Port of Registry : D e l f z i j l + e-mail : eemssprinter@amasus.nl
- Call Sign : P H I Z
- IMO No. : 9421611
- MMSI No. : 245407000
  
- D.W.A.T. : 2650
- D.W.C.C. : 2530
- Tonnage GT/NT : 1862 / 920
- L.O.A. : 87,00 m
- Beam : 11,45 m
- Draft laden : 4,26 m
- Ballast draft : approx. 3,20m
- Airdraft : 8,50 m
  
- Hold dimension : 56,19 x 9,0 x 6,70 m
- Cubic capacity : 119.537 cbft ( 3385 m<sup>3</sup> )
- Tanktopstrength : 12,0 mt / m<sup>2</sup>
- Bulkheads : 2 movable bulkheads
- Hatch covers : steel pontoons, operated with own gantry crane
  
- Main engine : ABC
- output : 1100 KW
- Propeller : CPP, 4 blades, left handed
- Consumption : abt 10 knots on abt 5.000 liter gasoil
- Auxiliaries : 1 Veth engine, KVA: 150, Hz: 50
- Emergency Gen. : 1 Veth engine KVA 77, Hz 50